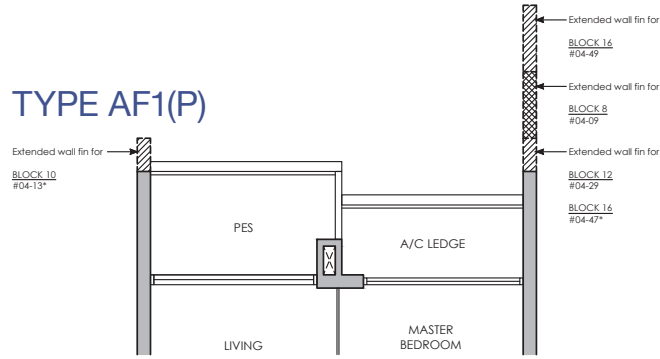
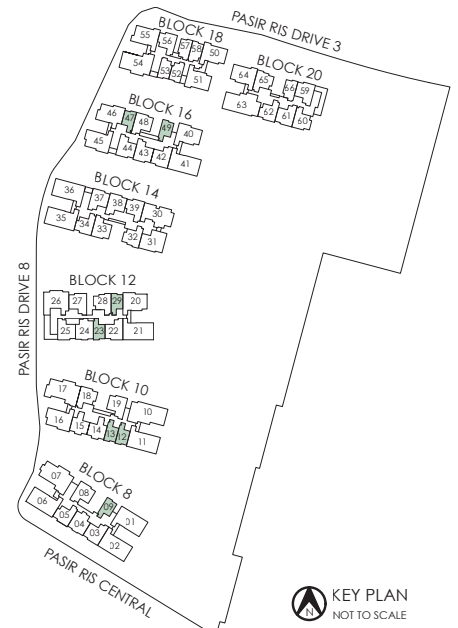
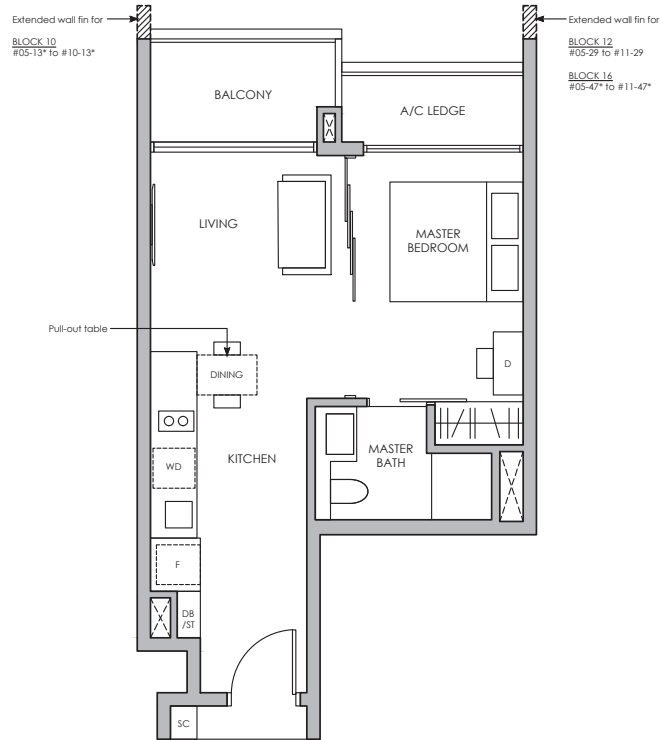


TYPE AF1(P)



TYPE AF1



TYPE AF1(P)

48 sq m / 517 sq ft
INCLUSIVE OF 5 SQM PES
& 3 SQM A/C LEDGE

- BLK 8 #04-09
- BLK 10 #04-12*
#04-13*
- BLK 12 #04-23*
#04-29
- BLK 16 #04-47*
#04-49

TYPE AF1

48 sq m / 517 sq ft
INCLUSIVE OF 5 SQM BALCONY
& 3 SQM A/C LEDGE

- BLK 8 #05-09 TO #10-09
- BLK 10 #05-12* TO #10-12*
#05-13* TO #10-13*
- BLK 12 #05-23* TO #11-23*
#05-29 TO #11-29
- BLK 16 #05-47* TO #11-47*
#05-49 TO #11-49

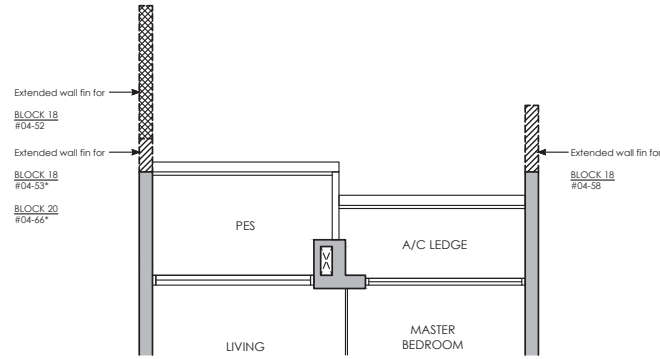
LEGEND:

- D - Dresser
- SC - Shoe Cabinet
- DB/ST - Distribution Board/Store
- F - Fridge
- WD - Washer cum Dryer

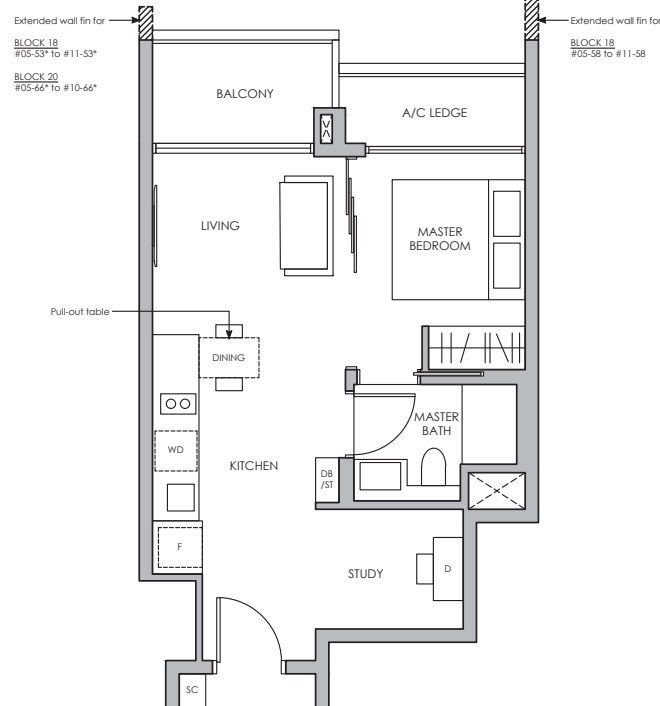
* MIRROR IMAGE



TYPE AS1(P)



TYPE AS1



TYPE AS1(P)

50 sq m / 538 sq ft
 INCLUSIVE OF 5 SQM PES
 & 3 SQM A/C LEDGE

- BLK 18 #04-52
- #04-53*
- #04-57*
- #04-58
- BLK 20 #04-66*

TYPE AS1

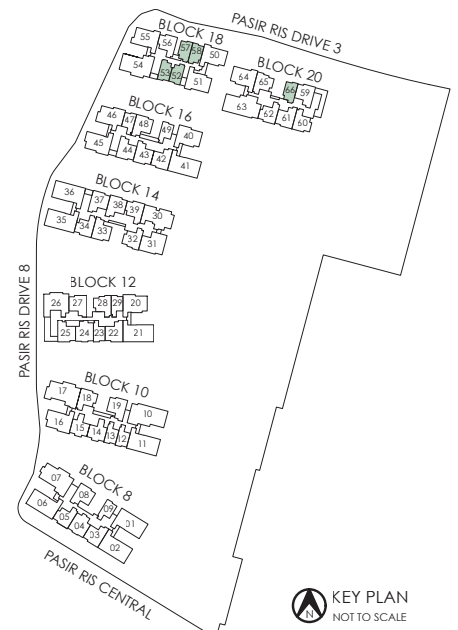
50 sq m / 538 sq ft
 INCLUSIVE OF 5 SQM BALCONY
 & 3 SQM A/C LEDGE

- BLK 18 #05-52 TO #11-52
- #05-53* TO #11-53*
- #05-57* TO #11-57*
- #05-58 TO #11-58
- BLK 20 #05-66* TO #10-66*

LEGEND:

- D - Dresser
- SC - Shoe Cabinet
- DB/ST - Distribution Board/Store
- F - Fridge
- WD - Washer cum Dryer

* MIRROR IMAGE



All plans are subjected to amendments as may be approved by the relevant authorities. Floor areas are approximate measurements and are subjected to final survey.
 *The balcony shall not be enclosed. Only approved balcony screens are to be used. For illustration of the approved balcony screen, please refer to the diagram annexed hereto as "Annexure".